



Taj Grandeur
Palm Jumeirah, Dubai, UAE



Modern Moma
Beijing, China



Burj Daman Tower
Dubai, UAE

2016/09



AluK Building Systems Private Limited

Bagmane Laurel,"B" Block, 2nd Floor, Level 3
Bagmane Tech Park, CV Raman Nagar
Bangalore-560093, Karnataka, India

T: +91 80 3304 3304
E: info@aluk.in

aluk.in

ALUK[®]

SC140



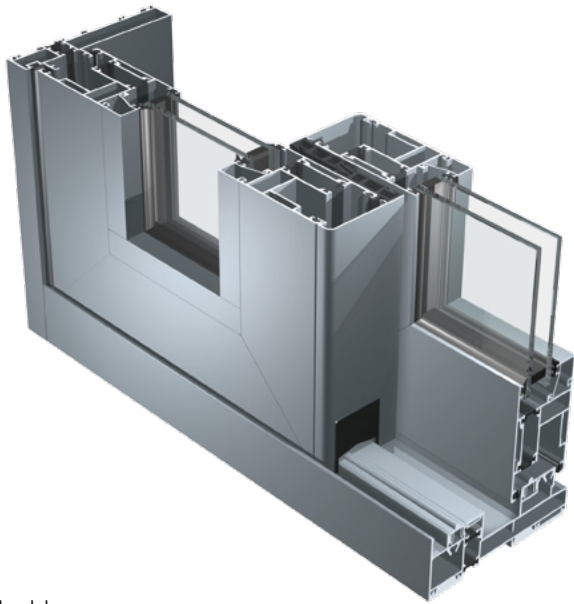
SLIDING DOOR SYSTEMS

Qingdao Haixing Yandao Int., Shandong, China

ALUK[®]

SC140 : SLIDING SYSTEMS WINDOWS & DOORS

The SC140 series for sliding doors is suitable for the realization of lift and slide solutions as well as large normal slider. Available in non-insulated or thermally broken, the series is designed for the construction of high quality frames. The robustness of the chassis allows for the construction of large windows: a typical example may be a glass patio, reaching up to the ceiling. The lift & slide mechanism, designed to facilitate the handling of heavy frames until 400 kg, makes this system very practical and functional. In fact, heavy glass can be installed without having its weight affect the maneuverability; it remains fluid and light. This is an ideal lifetime sliding solution for tropical and hot climate applications in high-rise buildings, individual residences and commercial establishments.

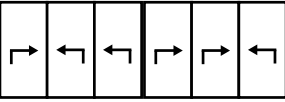
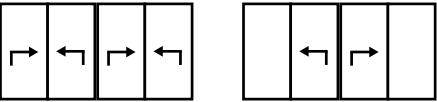
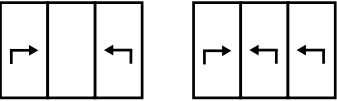
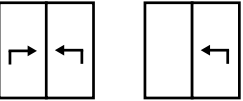


Product features

- A 140 mm wide frame in two track and 213 mm wide frame in three track, double or triple glazed slider with 56 mm depth of shutter. Central interlock section is 110 mm.
- Standard bottom threshold is 50 mm high. Options for 22 mm bottom threshold available in SC140TT for two track system.
- Carrier heavy duty roller which can carry load up to 400 kg load per shutter, giving very smooth sliding operation. 300 kg roller option is also available.
- SC140TT comes with a glazing bead based solution; hence convenience in glass interchangeability for users.
- Superior aesthetics with international design appeal: 45 degree join for shutters and 90 degree join for frames.
- Well-designed sloped bottom track with effective drainage mechanism
- Anodized rail on bottom track for extra smooth sliding.
- Solid and robust in performance works for very high design wind pressure; a thoroughly tested window system for demanding weather criteria of tropical zones. A tested and certified product as per EN norms for air/water /wind.
- All accessories, fittings, gaskets are AluK branded and tested for performance.
- Multipoint locking with handles available in choice of selected colours and finishes.
- This system is adapted for large dimensions with shutter weight up to 400 Kg of load bearing capacity per shutter.
- Both static and dynamic gaskets are realized in EPDM (ethylene-propylene elastomer). Retention brushes are in high-density propylene with central water-stripping.
- Infill can be double or triple glass or panels (thickness can vary from 10 to 40 mm).

Applications

- Windows & balcony doors
- 2 Track 2 Sashes
- 2 Track 3 Sashes
- 3 Track 4 Sashes
- 3 Track 6 Sashes
- Sliding and fixed combination
- Lift and slide or slide only



Product configuration

- Available in 2 track and 3 track sliding option with 2/3/4/6 panels.
- Multiple reinforced interlock options for higher structural stability cases.

	SC140	SC140TT
SYSTEM FEATURES	Non-Insulated	Thermally Broken
Dimensions (mm)	H 2500 mm x W 2800 mm	H 2500 mm x W 2800 mm
Max Sash Weight (kg) (max)	400 kg	400 kg
Options	Larger height Sliding or lift & slide Fixed and sliding sash window Motorized (optional)	Larger height Low threshold (for disabled people) Sliding or lift & slide Fixed and sliding sash window Motorized (optional)
Dual Colour Option	-	●
Multi-Point Locking	●	●
Glazing Thickness	10 mm - 40 mm	10 mm - 40 mm



Performances

- Thermal:
Uw = 1,4 W/m²K with Ug = 0,5
- Air/Water/Wind:
Air: 4
Water: 8A
Wind: A4
- Acoustic:
Rw (Ct; Ctr) = 38 (-1; -3) dB

Uw value for a 2500 x 2180 mm size.
"Warm edge" equal to 0,05 W/m K
calculated according to EN ISO 10077-1

